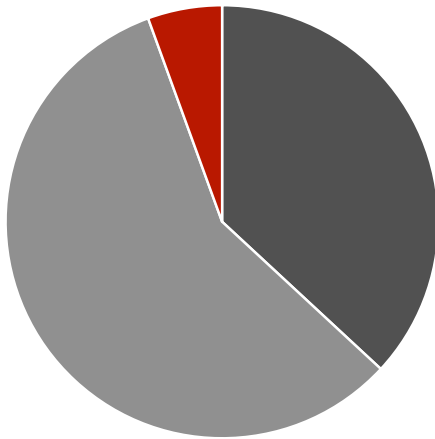
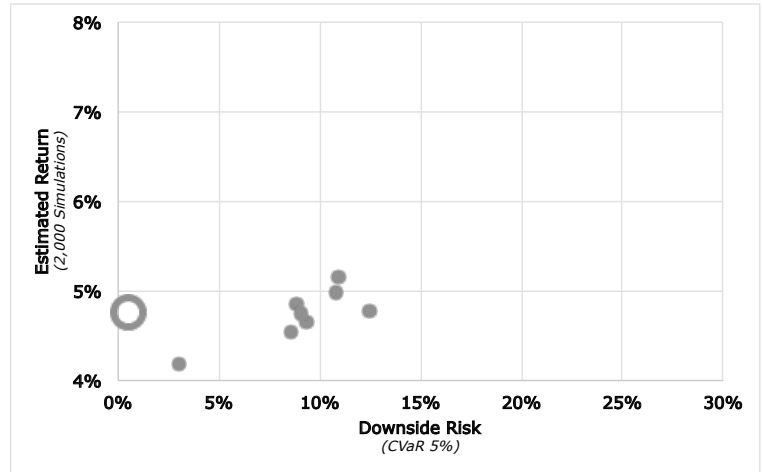


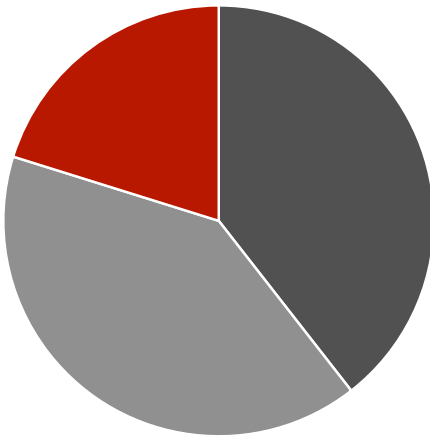
Conservative



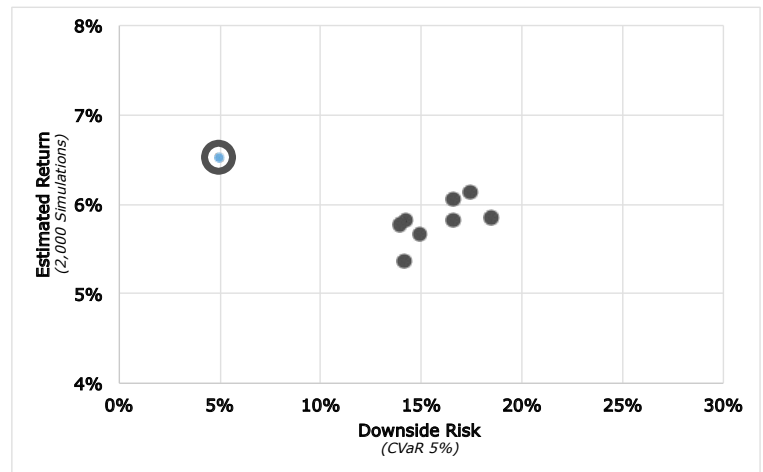
■ Alternatives ■ Bonds ■ Equities



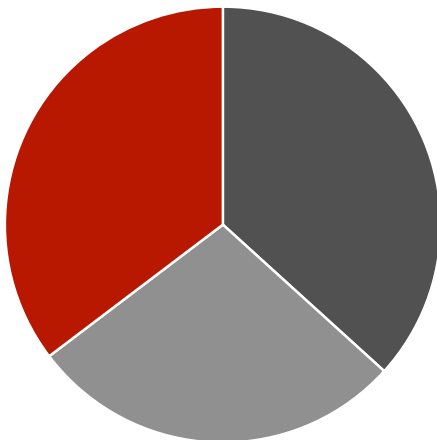
Moderate



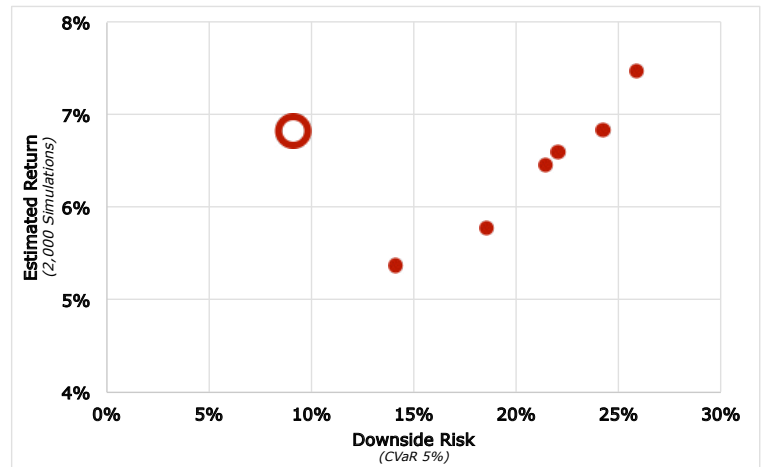
■ Alternatives ■ Bonds ■ Equities



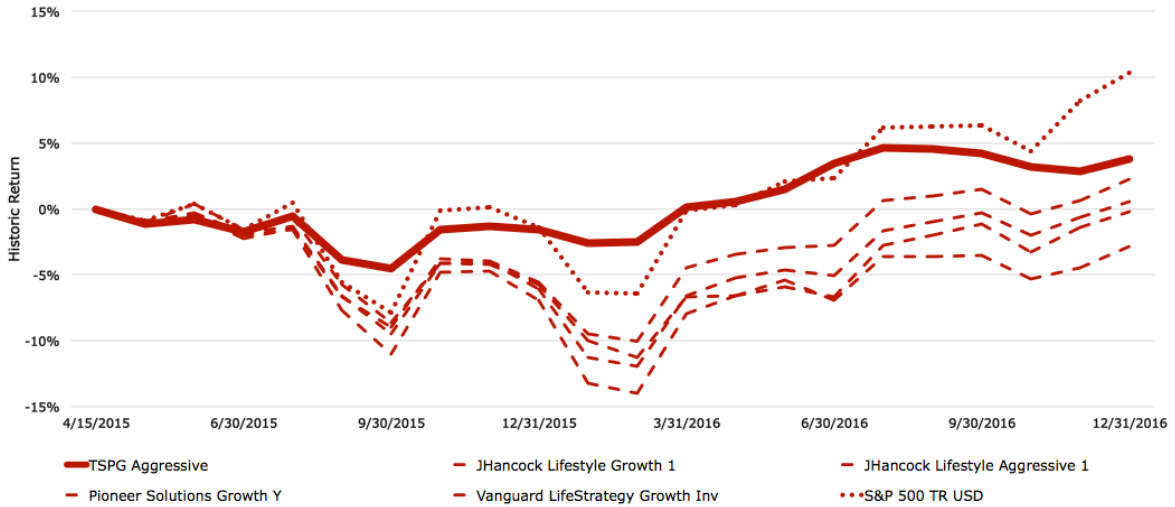
Aggressive



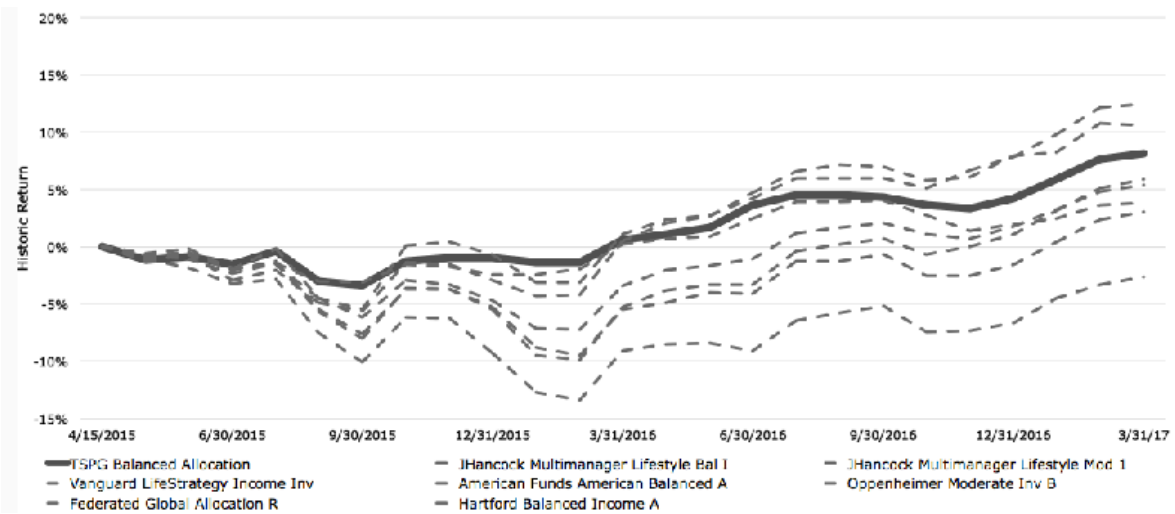
■ Alternatives ■ Bonds ■ Equities



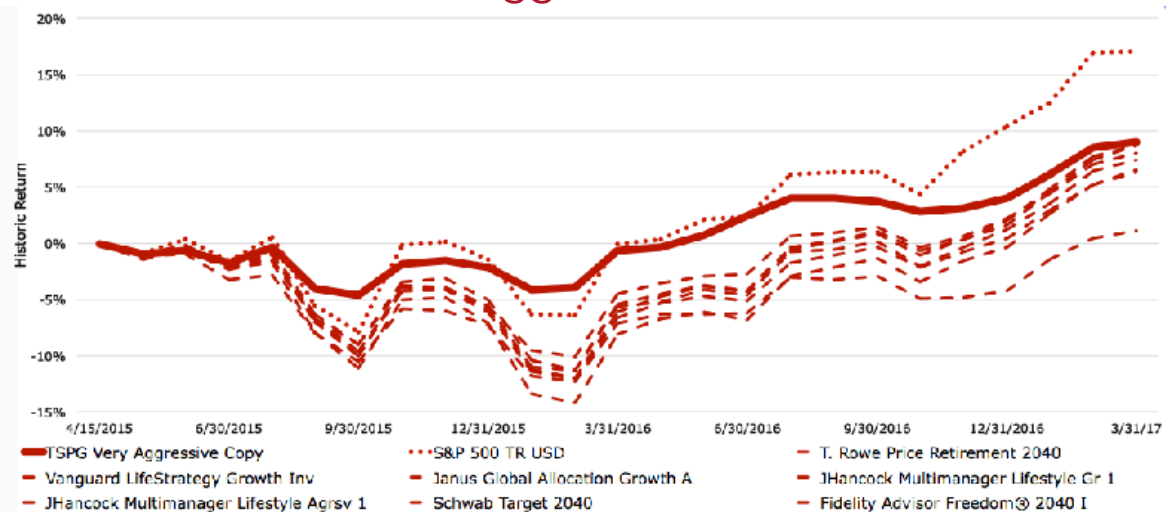
Conservative



Moderate



Aggressive



	Conservative		Moderate		Aggressive	
	TSPG	Peer ¹	TSPG	Peer ¹	TSPG	Peer ¹
2015	1.17%	-3.97%	-0.96%	-4.74%	-2.17%	-5.11%
2016	3.41%	5.26%	5.27%	6.51%	6.35%	5.82%
Total	4.62%	1.07%	4.26%	1.43%	4.05%	0.40%
Annualized	2.67%	0.62%	2.46%	0.83%	2.34%	0.23%

Historical returns are not necessarily representative of future returns. Investment products are: • Not a Deposit • Not FDIC Insured • Not Insured by any Federal Government Agency • Not Guaranteed by the Bank • May Go Down in Value.
¹Peer Average